



津波 tsunami
Izakaya & Teppanyaki

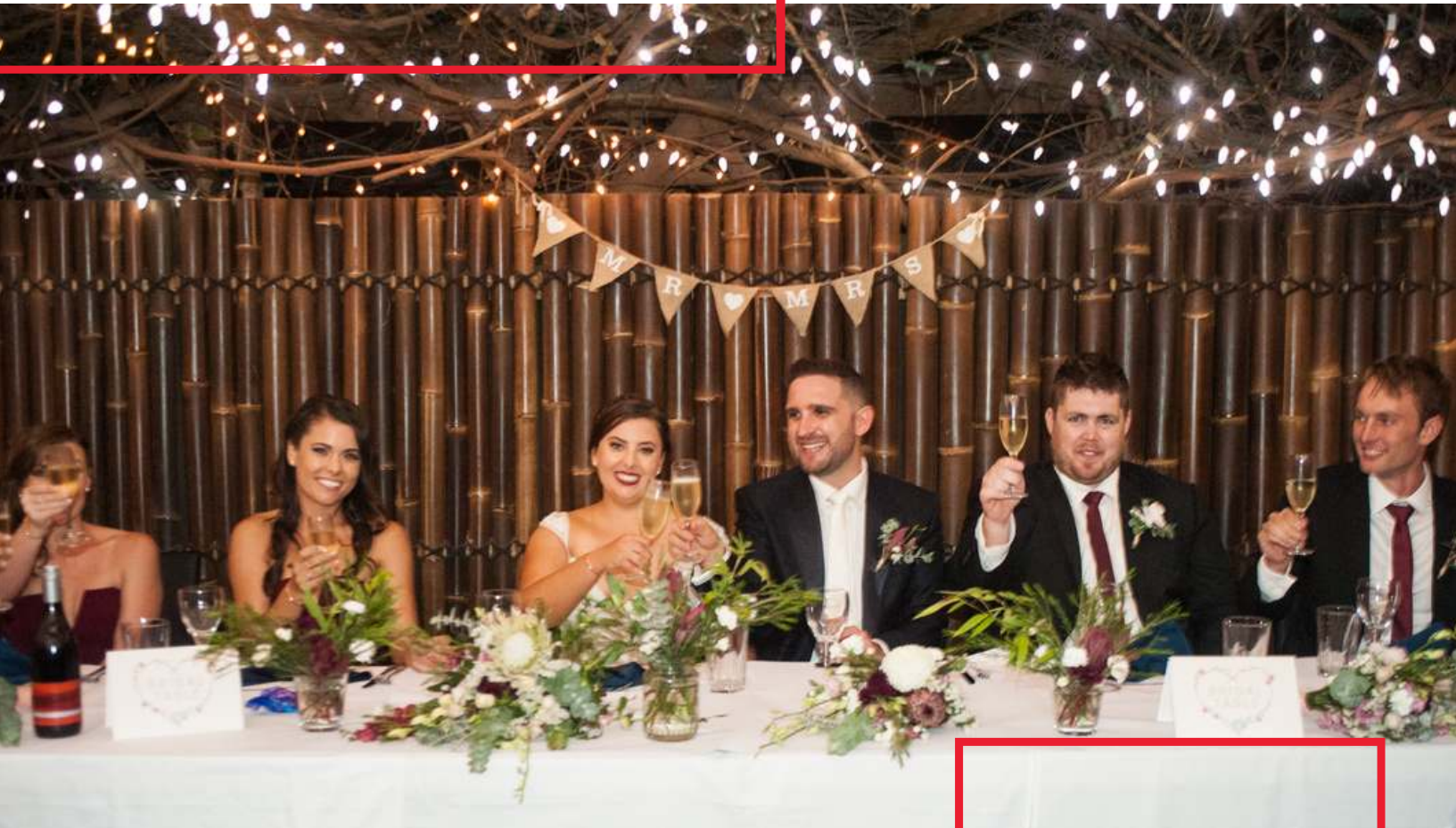
TSUNAMI WEDDINGS

Japanese elegance & tradition in an Australian setting

About Us

 Venue viewing by appointment only

 18 Glyde Street, Mosman Park



Stun guests with your fairytale wedding. Celebrate your journey down the aisle surrounded by lush greenery, sheltered by twinkling fairy lights. Catering for all weddings, from big to small, cocktail or sit-down, we will bring your vision to life. Quality food, great service, immersed in culture all makes for an unforgettable experience at Tsunami, Perth's premier Japanese wedding venue. With a dedicated Functions Coordinator, you will be taken care of right through to the I-do's.

TSUNAMI WEDDINGS

- 1 **CUISINE FROM NEAR & FAR**
- 2 **GREAT SERVICE**
- 3 **IMMERSED IN CULTURE**
- 4 **UNIQUE VENUE**

RIPPLE

Hire fee: \$350
minimum spend:
\$4300.00 (not including hire fee).

CAPACITY

Cocktail style: 100 guests
Sit-down: 40 guests
(30 guests for covered area only)

BEST SUITED

Intimate Cocktail Weddings
Wedding ceremonies
Private small sit-down reception
Pre-dinner drinks and canapes
For large wedding.

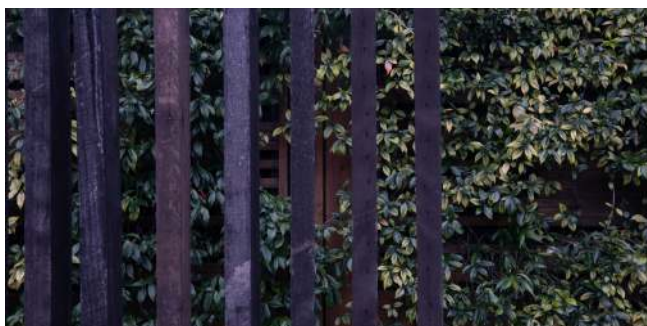
FEATURES

Vertical Plant wall, fairy-lights,
bar, complete privacy with own
entrance and lavatories.



Ripple is a beautiful area, that was architecturally designed to emulate a sushi roll. With it's white pebbles, dark concrete & spiral layout, it is a unique space perfect for your upcoming celebration. Ripple is completely private, with both outdoor & undercover areas.

A special feature of this space is it's lush vertical greenery wall, the perfect backdrop for your romantic photos to treasure forever.



THE WHOLE GARDEN AREA

Venue hire fee: \$500 or \$750 including back room. minimum spend \$9000.00 (\$10,000 Including back room).

The Garden is the ideal venue for your wedding reception, this one of a kind space will take your breath away with its oriental atmosphere. The show-stopper is the vines filled with fairy lights, that will take your wedding photos to the next level.

For those who love to dance, we suggest securing the back room in addition to the Garden, to ensure there is a dedicated dance floor for your guests.

Speak to your Functions Coordinator about the ranging levels of privacy we can offer in this space.



CAPACITY

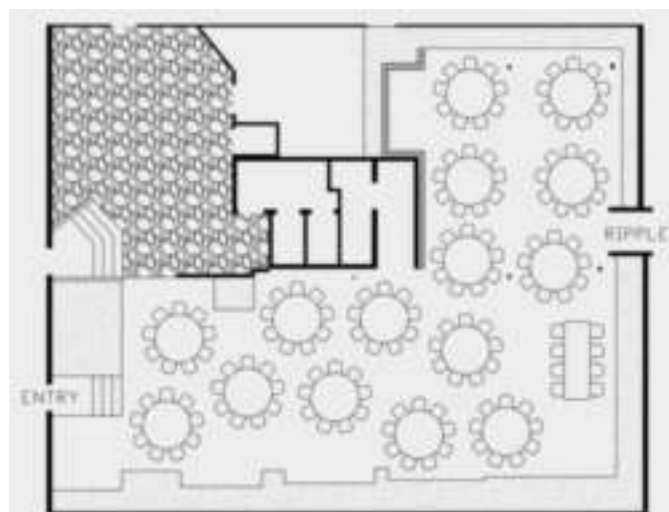
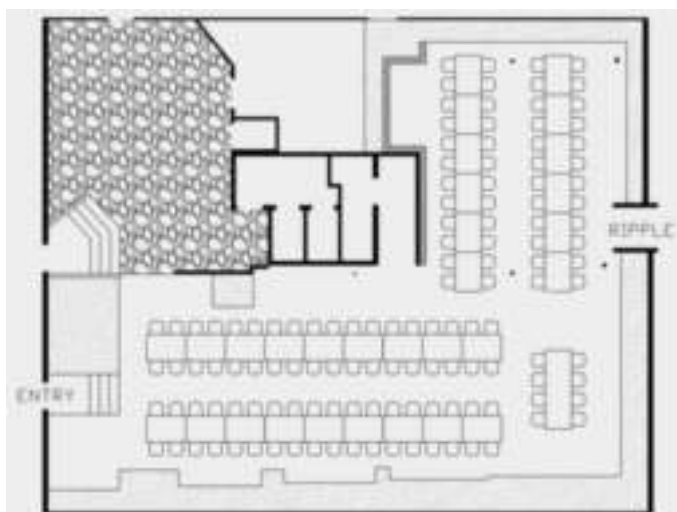
Cocktail style: 200 guests
Sit-down: 120 guests

BEST SUITED

Cocktail Wedding reception
Wedding ceremonies
Larger sit-down reception.

FEATURES

Weatherproof,
Covered in vines and
fairy lights, Private Bar, and
backdrop of mount Fuji Mural
(can be covered upon request).



BACK ROOM

Used in addition with garden area for large weddings.



The Back Room is the back section of our restaurant, it's intimate & romantic with beautiful views of the Garden. The back room is a great addition to your wedding, as it provides extra space for dancing, a private bar & so much more.

Speak to your Functions Coordinator about adding the back room to your wedding.

CAPACITY

Cocktail style: 50 guests
Sit-down: 30 guests

BEST SUITED

Meet and greet before main dinner.
Dance floor and DJ area.

FEATURES

Indoors, overlooks the Garden area and DJ section.
Minimum Spend on Friday, Saturday Sunday will apply.



Lunch Weddings

TWO COURSE PLATED LUNCH MENU

Choose from entree & main or main & dessert
\$80 per person | minimum spend of \$4,000 | 4 hours
Alcohol on consumption (\$30pp minimum)

ENTRÉE OPTIONS- Choose One

Chicken Kara age with Japanese Spicy Mayo and green salad (gf)
Classic Agedashi Tofu with choy sum & yuzu pepper broth (v) (gf)
Local Prawn Fillo, truffle mayo and salad
Assorted sushi rolls, 4 different types

MAIN OPTIONS- Choose One

Crumbed white fish katsu, tonkatsu sauce and seasonal grilled vegetables
Tsunami Teriyaki chicken, chimichurri mayo and grilled vegetables
Miso Marinated Salmon, Shiso sour cream, Furikake flavoured rice and
variety of mushrooms. (gf)
Vegetarian Risotto, crispy rice cracker and grilled seasonal vegetables (v) (gf)

DESSERTS- Choose One

House made vanilla and chocolate ice cream

EXTRAS

Alternative drop \$6 per course
Choice Menu of 2 dishes \$11 per course

DRINKS – ON CONSUMPTION, PRE-PAID BAR TAB OF MINIMUM \$30 PER PERSON

Please choose from 2 whites, 2 reds, 2 beers & a sparkling wine.
Please choose 4 spirits & preferred mixers.
See Tsunami's wine menu for menu selection

Vegetarian & Gluten free options available, please advise function coordinator. Menu subjects change due to seasonal variations & unavailability of some produce.

Rishoku Style

CANAPE WEDDING MENU

CANAPE MENU 1: \$121 per person | 10 items includes

3-hour standard beverage package

CANAPE MENU 2: \$132 per person | 16 items includes

5-hour standard beverage package

COLD OPTIONS

Vegetarian sushi with tempura vegetables with spicy mayonnaise (v) (gf)

Sushi with Tempura prawns & Avocado covered in roasted sesame seeds

Teriyaki chicken and Avocado sushi roll

Smoked Salmon and cucumber sushi roll

Local Prawns paired with Avocado crema, tobiko and spring onion

Hokkaido scallops with chilli sauce and truffle dressing

Smoked Salmon on a rice cracker with wasabi crème.

Vegetable tart with Avocado crema and cherry tomato

HOT OPTIONS

Spicy chicken Karaage

Pork and Vegetable Gyoza

Harumaki Japanese Spring roll (v)

Crumbed white fish pieces with Japanese mayo

Tempura Prawns

Beef Skewers

Takoyaki with okonomiyaki sauce and bonito flakes

Vegetarian samosa (v)

SUBSTANTIAL OPTIONS - \$7.50 per item

Teriyaki Chicken on rice

Teriyaki Fish on rice

Vegetarian Yakisoba (stir-fry noodle)

Chicken Yakisoba

DRINKS – PACKAGE

All of our wedding packages include a bronze drinks package, please see our packages should you wish to upgrade. We do not hold wedding functions with drinks on consumption (except lunch functions).

Special dietary options are available, please advise the Function coordinator for further information. Menu subject to change due to seasonal variations and unavailability of some produce.

Set Menu 1 Silver

4 COURSE PLATED DINNER

\$138 per person | minimum of 20 people



STARTER

Edamame with Chilli salt

ENTRÉE OPTIONS - Choose One

Chicken Kara age with Japanese Spicy Mayo and green salad (gf)

6 pieces Hiramasa sashimi (king fish) with Chilli vinaigrette, seaweed salad (gf)

Classic Agedashi Tofu with choy sum & yuzu pepper broth (v) (gf)

Local Prawn Filo, truffle mayo and salad

Assorted sushi rolls, 4 different types

MAIN OPTIONS- Choose One

Crumbed white fish katsu, tonkatsu sauce and seasonal grilled vegetables

Grilled grass-fed fillet steak with red wine reduction sauce

Tsunami Teriyaki chicken, chimichurri mayo and grilled vegetables

Miso Marinated Salmon, Shiso sour cream, Furikake flavoured rice
and variety of mushrooms (gf)

Vegetarian Risotto, crispy rice cracker and grilled seasonal vegetables (v) (gf)

DESSERTS- Choose One

Yuzu chocolate Mousse

Sesame Creme Brule with Vanilla ice cream

EXTRAS

Alternative drop \$6 per course

Choice Menu of 2 dishes \$11 per course

DRINKS – PACKAGE

All of our wedding packages include a standard drinks package, please see our packages should you wish to upgrade. *We do not hold wedding functions with drinks on consumption (except lunch functions).*

Special dietary options are available, please advise the Function coordinator for further information. Menu subject to change due to seasonal variations and unavailability of some produce.

Set Menu 2 Gold

4 COURSE PLATED DINNER

\$159 per person | minimum of 20 people



STARTER

Edamame with Chilli salt
Australian Fresh Oysters

ENTRÉE

Included Alternative drop of 2 choices

Grilled Barramundi with soy vinegar sauce & stir-fry bok choy
Local Prawn Fillo, truffle mayo and seaweed salad
Wagyu Beef tataki, seared fillet with ponzu sauce & salad
Classic Agedashi Tofu with choy sum & yuzu pepper broth (v)
Assorted sushi & sashimi combo

MAINS

Included Alternative drop of 2 choices

Grilled grass-fed fillet steak with red wine reduction sauce
Tsunami Teriyaki chicken, chimichurri mayo and grilled vegetables
Miso Marinated Salmon, Shiso sour cream, Furikake flavoured rice and variety of mushrooms (gf)
Slow cooked Lamb Ribs, grilled seasonal vegetables and spicy yellow capsicum sauce
Vegetarian Risotto, crispy rice cracker and grilled seasonal vegetables

DESSERTS OPTIONS- Choose One

House-made Matcha & Black sesame Mochi ice cream
Crème Brulee with Vanilla ice cream

EXTRAS

Choice Menu of 2 dishes \$10 per course

DRINKS – PACKAGE

All of our wedding packages include a bronze drinks package, please see our packages should you wish to upgrade. We do not hold wedding functions with drinks on consumption (except lunch functions).

Special dietary options are available, please advise the Function coordinator for further information. Menu subject to change due to seasonal variations and unavailability of some produce.

Set Menu 3 Platinum

5 COURSE PLATED DINNER

\$192 per person | minimum of 20 people



APPETIZER

Nigiri Selection, Salmon and Tuna

STARTER

Australian Fresh Oysters

ENTRÉE

Included Alternative drop of 2 choices

Grilled Barramundi with soy vinegar sauce & stir-fry bok choy

Local Prawn Fillo, truffle mayo and seaweed salad

Wagyu Beef tataki, seared fillet with ponzu sauce & salad

Classic Agedashi Tofu with choy sum & yuzu pepper broth (v)

MAINS

Included Alternative drop of 2 choices

Grilled grass-fed fillet steak with red wine reduction sauce

Tsunami Teriyaki chicken, chimichurri mayo and grilled vegetables

Miso Marinated Salmon, Shiso sour cream, Furikake flavoured rice and variety of mushrooms.

Slow cooked Lamb Ribs, grilled seasonal vegetables and spicy yellow capsicum sauce

Vegetarian Risotto, crispy rice cracker and grilled seasonal vegetables

DESSERT

Included Alternative drop of 2 choices

Yuzu chocolate Mousse

Matcha Mousse

Crème Brulee with vanilla ice cream

DRINKS – PACKAGE

All of our wedding packages include a bronze drinks package, please see our packages should you wish to upgrade. We do not hold wedding functions with drinks on consumption (except lunch weddings).

Special dietary options are available, please advise the Function coordinator for further information. Menu subject to change due to seasonal variations and unavailability of some produce.

Beverage packages

Choose a drink package for your special day.

Want to create your own cocktail ?

Contact our Function coordinator to discuss.



STANDARD / BRONZE – Included in all dinner packages

Sparkling Wine | Cherubino Folklore Sparkling or San Martino Prosecco

White Wine | Water Dancer Semillion Sauvignon Blanc

Red Wine | Water Dancer Cabernet Merlot

Beers | Carlton Dry, Hahn Light

SILVER – Extra \$14 per person

Sparkling Wine | San Martino Prosecco or Willow Bridge Blanc de Blanc

White Wine | Water Dancer Semillion Sauvignon Blanc

or Cherubino Folklore Classic Dry White or Willow Bridge Solana Rose

Red Wine | Willow Bridge Gravel Pit Shiraz

Beers | Asahi Super Dry and Hahn Light

GOLD – Extra \$18 per person

Champagne | Gosset Extra Brut Champagne

White Wine | Voyager Semillon Sauvignon Blanc and Willow Bridge G1 -10 Chardonnay

Red Wine | Cherubino 'IV' Counoise Mataro Shiraz Grenache and Stella Bella Shiraz

Beers | Asahi Super Dry and Hahn Light

Please note these are sample wines and subject to change as Tsunami's wine list evolves.

Rest assured the new items will be just as good.

Kajitsushu Upgrades (umeshu, yuzushu, momoshu etc)

Place bottles of plum wine, yuzushu or momoshu etc on your guests tables, with accompanying tubs of ice and sparkling water for something unique in Perth. Charged on a consumption basis. Purchase a set amount for the duration of the reception. Please ask us for sample tastings.

All Beverage packages include soft drinks, juices, and sparkling water. Drinks menu is subject to availability.

EKISUTORA

Japanese for 'extra', give your event that extra touch of wow.

COCKTAIL BAR

Fancy an hour of G&Ts? Perhaps you're a fan of the Yuzu highballs? Or Caip We can set up a dedicated cocktail bar serving your favourite. There is no extra charge, just the price of the drinks consumed, or set a bar tab and when it's gone, it's gone.



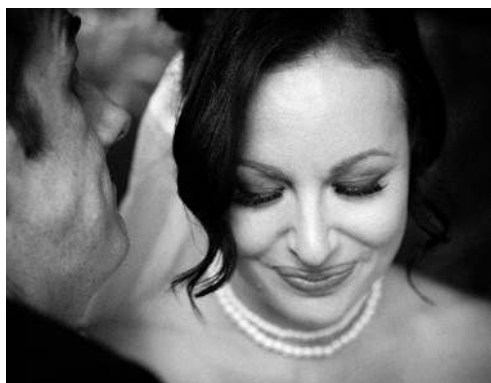
Food Extras

- ◆ Children's Menu: Special kids bento box, ice-cream dessert and free flow of soft drinks and juices- \$35
- ◆ Supplier or entertainer Meals: A main meal (chef selection) with 2 standard drink of wine or beers - \$45
- ◆ Canapes on Arrival, 30 minutes, 3 kinds of chef selection canapes \$12pp
- ◆ Substantial canape bento boxes \$7.50 per item
- ◆ Live Yakitori station, have skewers of anything you want grilled slowly over binchotan charcoal in front of your guests, minimum of 40 - from \$9 per person. Please contact the function coordinator menu options.



Drink Extras

- ◆ House spirit on Consumption
- ◆ Add Sake and Plum wine to your beverage menu - organisers can be provided with free tastings of Sake or Plum wine prior to function.



Event Extras

- ◆ Round Tables of 8-9 people seating - \$500 Flat Fee
- ◆ Wait staff to wear Kimonos - \$50 per kimono
- ◆ Microphone- \$60 Flat Fee
- ◆ Projector- \$60 Flat Fee
- ◆ Chair covers - \$2 per seat
- ◆ Decoration pack down or clean up fees - \$100 Flat fee

TSUNAMI COMPLIMENTARY INCLUSIONS

- ◆ Trestle Tables
- ◆ Cocktail Tables
- ◆ Classic white table clothes (for Trestle Tables)
- ◆ White or Navy-Blue napkins
- ◆ Standard Banquet chair
- ◆ In house speaker system
- ◆ Silver Cutlery
- ◆ Water, Wine, and champagne flute

Please contact our Function coordinator for our preferred suppliers list.



WEDDING SPECIALS

See our wedding discounts & specials available.



Mid-week Weddings

- Valid Monday - Thursday
- 20% off total price of Food & Beverage Package.)

Not valid in conjunction with any other offer
Conditions apply; excludes Package A and public holidays. Minimum spend after discount of \$4000.

Winter Weddings

- ◆ Valid 1st June- 31st July
- ◆ 20% off total price of Food & Beverage Package.

Not valid in conjunction with any other offer
Conditions apply; excludes Package A and public holidays. Minimum spend after discount of \$4000.

Frequently asked questions

Q: My guests do not drink alcohol. Do you have non alcoholic package available?

A: Tsunami is a fully licensed tavern and as such is primarily concerned with the sales of food and alcohol. The cost of our RSA trained staff is the same to serve soft drink as to serve alcohol. The main cost is labour so we cannot serve non alcohol packages at a cheaper rate.

Q: How long will my wedding go for? When should I start?

A: Our wedding functions are for 5 hours. They usually start around 5 – 6pm. We can extend this at extra cost but not too late at night because of noise restrictions. Please discuss with our wedding consultant.

Q: Can I have a DJ and dancing outside in the garden?

A: Due to council noise restrictions we are unable to have this. But we clear out the back room and have dancing inside. There are plug in points for a DJ and we have Mackie House Speakers built in so your DJ doesn't have to bring his own speakers.

RECOMMENDED SUPPLIERS

Amazing local suppliers that we highly recommend.

Photographer

Manny Tamayo Photography

mannytamayo.com.au

[Instagram.com/manny_tamayo](https://www.instagram.com/manny_tamayo)

manny@mannytamayo.com | 0425 051 246



Jazz Band

John Bannister & The Charisma Brothers

charismabrothers.squarespace.com/home

[facebook.com/charismabrother](https://www.facebook.com/charismabrother)

bannisterjohn@hotmail.com | 0412 687 716



Celebrant

Amanda Rowe Celebrant

<https://www.amandarowecelebrant.com>

<https://bit.ly/3hwpcjB>

Hire Company

Black Label Events

www.blacklabelevents.com.au

[instagram.com/blacklabelevent](https://www.instagram.com/blacklabelevent)

info@blacklabelevents.com.au | 0400 213 236

BLACK LABEL
EVENTS



Cakes & More

Cupids Delights

www.cupidsdelight.com.au

[instagram.com/cupidsdelight](https://www.instagram.com/cupidsdelight)

info@cupidsdelight.com.au | (08) 6248 4099



Florist

Sweet Floral

www.sweetfloral.com.au

[instagram.com/sweetfloralperth](https://www.instagram.com/sweetfloralperth)

flowers@sweetfloral.com.au | (08) 9447 3384

sweet
floral



Stationery

Creative Line & Co
www.facebook.com/creativelineandco
instagram.com/creativeline_andco
creativeline.andco@gmail.com | 0435 747 864



DJ

Molodj
www.molodj.com
www.facebook.com/molodjperth
info@molodj.com | 0426 770 520



Mens Suits

InStitchu
www.institchu.com
www.instagram.com/institchu
frida.b@InStitchu.com | (08) 6268 0237





Cars & Limousines

Lead Sled Limousines

www.leadsledlimos.com.au

[Instagram.com/leadsledlimos](https://www.instagram.com/leadsledlimos)

info@leadsledlimos.com.au | 0413 764 777



Photo Booths & Flower Walls



Adept Photo Booths

www.adeptphotoboosts.com.au

[instagram.com/adeptphotoboosts](https://www.instagram.com/adeptphotoboosts)

hello@adeptphotoboosts.com.au | 0408 899 834



Videographer

Timeline Design & Advertising

[facebook.com/timelinedesignandadvertising](https://www.facebook.com/timelinedesignandadvertising)

pindukaichakawata@gmail.com | 0468 996 834



Sake

SuperSake

www.supersake.com.au

www.instagram.com/supersake.com.au

brett@supersake.com.au | 0418 915 533



T & C'S

DEPOSITS

Tsunami does not accept tentative bookings due to high demand on our function spaces. A deposit of \$500 is required to secure your booking. Once paid, please send the remittance receipt to your Function Coordinator. All deposits are non-refundable. You will be reimbursed the week after your event, subject to no breakages etc.

CANCELLATION

In the event of a function being cancelled within 30 days (written notice is required to be given) of the served date. Tsunami reserved the right to charge 30% of the estimate value of your event. Any event cancelled within 14 days of the reserved date are non-refundable.

CANCELLATION DUE TO COVID

Clients will have the right to postpone an event with no additional charges if there were a sudden change in government restriction related to COVID-19 that will prevent the event from going forward. Any payments made after the initial booking deposit can be refunded upon the client's request. The booking deposit of \$500 will remain non-refundable, however, the deposit is able to be transferred to a later date.

FINAL DETAILS

Confirmation of final details as well as final payment is required two weeks prior to your event.

The Final details includes:

- Confirmed Food and beverage packages
- Confirmed number of guests
- Event Schedules
- Venue Set up

- Dietary requirements

Any guests with special dietary requirements presented on the night, will cause delay in service, or may not be able to be catered for.

We may be able to accommodate an increase in number guests, however, confirmation of final numbers is what you will be charged for. Please note we do not refund for guest, in-case of a no-show.

PAYMENT

All invoices sent by Tsunami must be paid 14-days prior to the event. Electronic bank transfer details can be found your invoice. Visa and Mastercard is accepted, AMEX payments will require 1.5% surcharge. Tsunami does not accept Diners Club. Any excess charges will have to be settled on the day of the function. Such as, extra food, spirits, sake, additional guests' numbers.

FOOD AND BEVERAGES

All prices shown throughout this booklet and packages are inclusive of GST and are based on current and foreseeable costs but may be subject to increase at Tsunami's discretion, in which case 30 days' notice will be given to clients.

Function organisers are not permitted to supply their own food or beverage under any circumstances (cakes being the exception).

Tsunami will have the right to confiscate any food or beverages that is brought to the venue without any prior written agreement with the function coordinator. Beverage payment on consumption can be an option, to do so a pre-paid fee of \$30 per person is required.

SET UP AND PACK DOWN

We are happy to accommodate decorations (other than confetti or

rice), if there is anything that you are unsure of, please ask the Function Coordinator. We only ask that you take down your decorations after. We can take down more complicated decorations for you at a fixed hourly rate.

All Vendors can have access to the venue for drop-off of the day of the event, anytime after 1pm. We cannot receive any goods before this time. Clean up must be done on the night of or the following day (after 1pm). Any remaining cleaning or packing down deemed necessary by Tsunami will incur \$100 flat rate deduction from the deposit to cover the extra labour cost.

All prices are inclusive of basic table set up, this includes cutlery, glassware, tablecloth, napkins and sharing plates. The venue will not be able to provide place cards, menus, and bonbonnières. All items must be removed from the room the same day at the conclusion of the function. Any property left at the restaurant more than 3 days will be disposed of. Last minute changes in Set up within 24 hours prior to the event will cost extra \$200 as it requires additional set up crew.

Should you require extra staff (in addition to our usual allocation) a charge of \$50.00 per staff member per hour will apply.

SMOKING

Tsunami is a non-smoking venue; it is prohibited within 10m of a public entrance. Guests who choose to smoke must exit the venue from the front main door of the restaurant, as the function entrances will be closed throughout the night to ensure safety of the other function guests.

Guests are not permitted to bring any glassware or beverages from Tsunami when going out to smoke.

RESPONSIBILITY

The patron assumes responsibility for all damages caused by them or their guests, whether in the function spaces or any part of the venue. Should damage occur an amount will be deducted from the deposit.

Tsunami is not liable for any damage to, or loss of, any client's or outsource supplier property left on the premises prior to, during or after an event.

The organisers of the event are financially responsible for any damage sustained to Tsunami's property or equipment by the client, guests, or outside contractors prior to, during or after a function.

SOUND CONTROL

Please be aware that Tsunami located in a suburban Area and that we respect our neighbours. Tsunami is equipped with a modern sound system and all music must go through our in-house speakers. Please speak to our Functions Coordinator early in the planning stages regarding the music for your event. If using a DJ other than our recommended one they will need to make a site visit before the event to make sure they understand the system so that everything will work smoothly on the night.

Tsunami reserved the right to control the volume throughout the night.

Due to council regulations, bands playing in our outdoor spaces are allowed as long as they are 'unplugged' i.e. no amplification. The only time external speakers can be used is for speeches.

A. Music in our outdoor spaces must be off by 10.00pm, although music inside can remain for the duration of the event with all the doors closed. Please ask you Function Coordinator if you would like to provide your DJ with a meal.

FUNCTION TIMINGS

The Function coordinator or restaurant manager will endeavour to vacate guests from the function room at or just after scheduled finish time. At this time we request that an assigned family member take responsibility for any table centrepieces and sentimental items provided by the Bridal couple. This will ensure complete return of all items and avoid any loss or misplacement.

DEPARTURE OF GUESTS

Guests are expected to leave quietly and promptly after the event has concluded. Tsunami is prepared to allow guests an additional half an hour to collect presents and vacate the premises. Should guests stay longer than thirty minutes, staff charges will apply. This is billable at a rate of \$45 per staff member per hour and \$65 per licensed manager required to stay to pack up the restaurant. (Only full hours apply). This staff charge will be deducted from the deposit.

TAKEAWAY

If you would like to take your left-over home, you release Tsunami from any liability with regard to possible spoilage or food-borne illness from leftover food removed from the event site.

RESPONSIBLE SERVICE OF ALCOHOL

Tsunami abides by WA guidelines on responsible service of alcohol as per our house policy. The venue reserves the right to refuse the service of alcohol to any patron deemed to be showing signs of intoxication. Under Western Australian liquor laws this also necessitates the removal of such persons from the venue and includes guests on a beverage package.